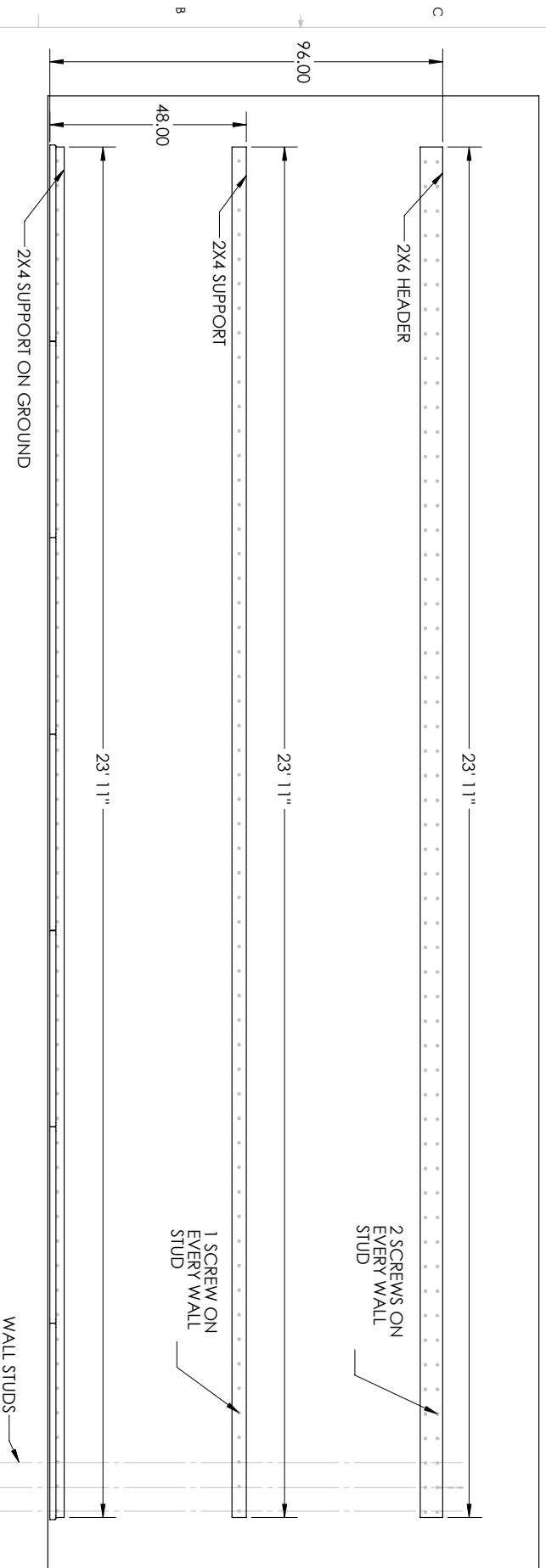


CLIMBING WALL INSTALLATION INSTRUCTIONS

- NOTES:**
- THE FOLLOWING DIMENSIONS ARE FOR A 7 PANEL CLIMBING WALL ASSEMBLY. LENGTHS MAY VARY DEPENDING ON THE NUMBER OF WALL PANELS
 - BE SURE TO LEAVE A 1/2" SPACE FROM THE SIDE OF MOUNTING BOARD TO THE EDGE OF CLIMBING WALL (A 24" WALL - 7 PANELS - WILL REQUIRE A 23' 11" LONG MOUNTING BOARD)
 - FOR HARDWARE, USE 3-1/2" DECK SCREWS



| | | | | | | | | | |
|---|--|--|--|---|--|--|--|---|--|
| <p>PROPRIETARY AND CONFIDENTIAL THIS IS THE PROPERTY OF KIDSFIT. ANY DRAWING, PHOTO, VIDEO, OR REPRODUCTION OF THIS DRAWING WITHOUT THE WRITTEN PERMISSION OF KIDSFIT IS PROHIBITED.</p> | | <p>UNLESS OTHERWISE SPECIFIED: DIMENSIONS ARE IN INCHES TOLERANCES: FRACTIONAL ± ANGULAR: MACH ±, BEND ± AND PLACEMENT ± THREE (3) DECIMAL ±</p> | | <p>DRAWN: CMW CHECKED: BNG APPR. MFG APPR: Q.A. COMMENTS:</p> | | <p>KIDSFIT 2190 CALHOUN ROAD HUGER, SC 29450</p> | | <p>DATE: _____ NAME: _____ TITLE: _____</p> | |
| <p>APPLICATION: USED ON</p> | | <p>DO NOT SCALE DRAWING</p> | | <p>FINISH</p> | | <p>SIZE: DWG. NO. B 7P - CW</p> | | <p>SCALE: 1:25 WEIGHT: SHEET 2 OF 4</p> | |
| <p>NEXT ASSY</p> | | <p>FINISH</p> | | <p>INTERFIT GEOMETRIC MATERIAL</p> | | <p>REV</p> | | <p>REV</p> | |



8 7 6 5 4 3 2 1

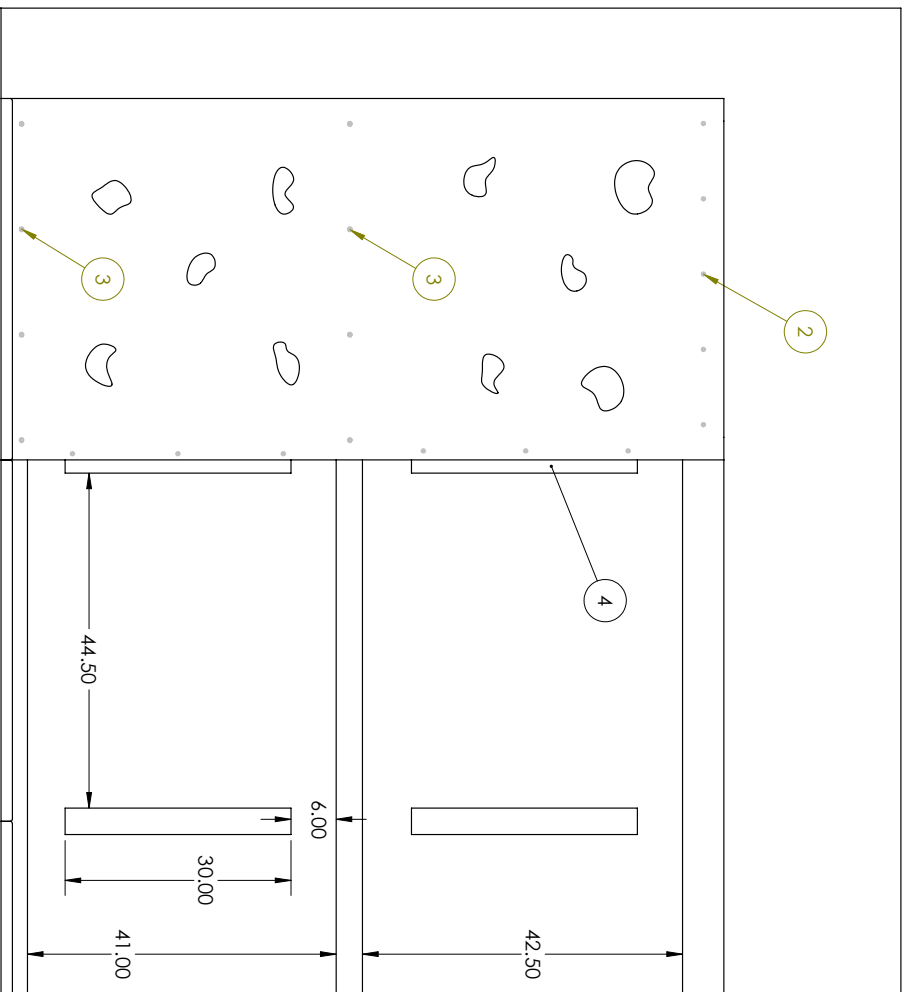
A B C D

CLIMBING WALL INSTALLATION INSTRUCTIONS

1. LEVEL EACH PANEL (*REMEMBER TO LEAVE A 1/2" SPACE BETWEEN THE SIDE OF THE MOUNTING BOARD AND THE EDGE OF THE CLIMBING WALL)
2. DRILL 5 3-1/2" DECK SCREWS EVENLY PLACED THROUGH THE CLIMBING WALL PANEL TO THE HEADER BOARD
3. DRILL 4 3-1/2" DECK SCREWS EVENLY PLACED THROUGH THE CLIMBING WALL PANEL TO THE MIDDLE AND GROUND SUPPORT BOARDS
4. CUT A 2 X 4 X 30 THEN MOUNT TO THE **BACK** OF THE PANEL USING 3 3-1/2" DECK SCREWS EVENLY PLACED SUCH THAT 1-3/4" OF THE 2 X 4 IS OVERHANGING (*THIS ALLOWS THE NEXT PANEL TO BE SCREWED TO THIS 2 X 4)
*THIS PROCESS KEEPS THE JOINT BETWEEN EACH PANEL STRONG AND TIGHT.

NOTES:

- CLIMBING HOLDS ARE PREMOUNTED USING ALLEN BOLTS - EXCESS BOLT WILL HAVE SPACE BEFORE HITTING EXISTING STUD WALL.
- DRIVE THE HEAD OF EACH SCREW BELOW THE SURFACE OF THE ROCK LIKE MATERIAL
- SEAM BETWEEN PANELS SHOULD BE VERY VERY TIGHT
- MAT HOLDS ARE LOCATED 64" FROM THE GROUND, 2 ON EACH PANEL (EACH SIDE HAS 1) DESIGNATED BY RED PAINT ON THE BOLT HEAD
- STUD WALL MUST BE SECURELY FASTENED TOP AND BOTTOM TO ACCOMMODATE 300+ POUNDS AT EVERY 4' INTERVAL

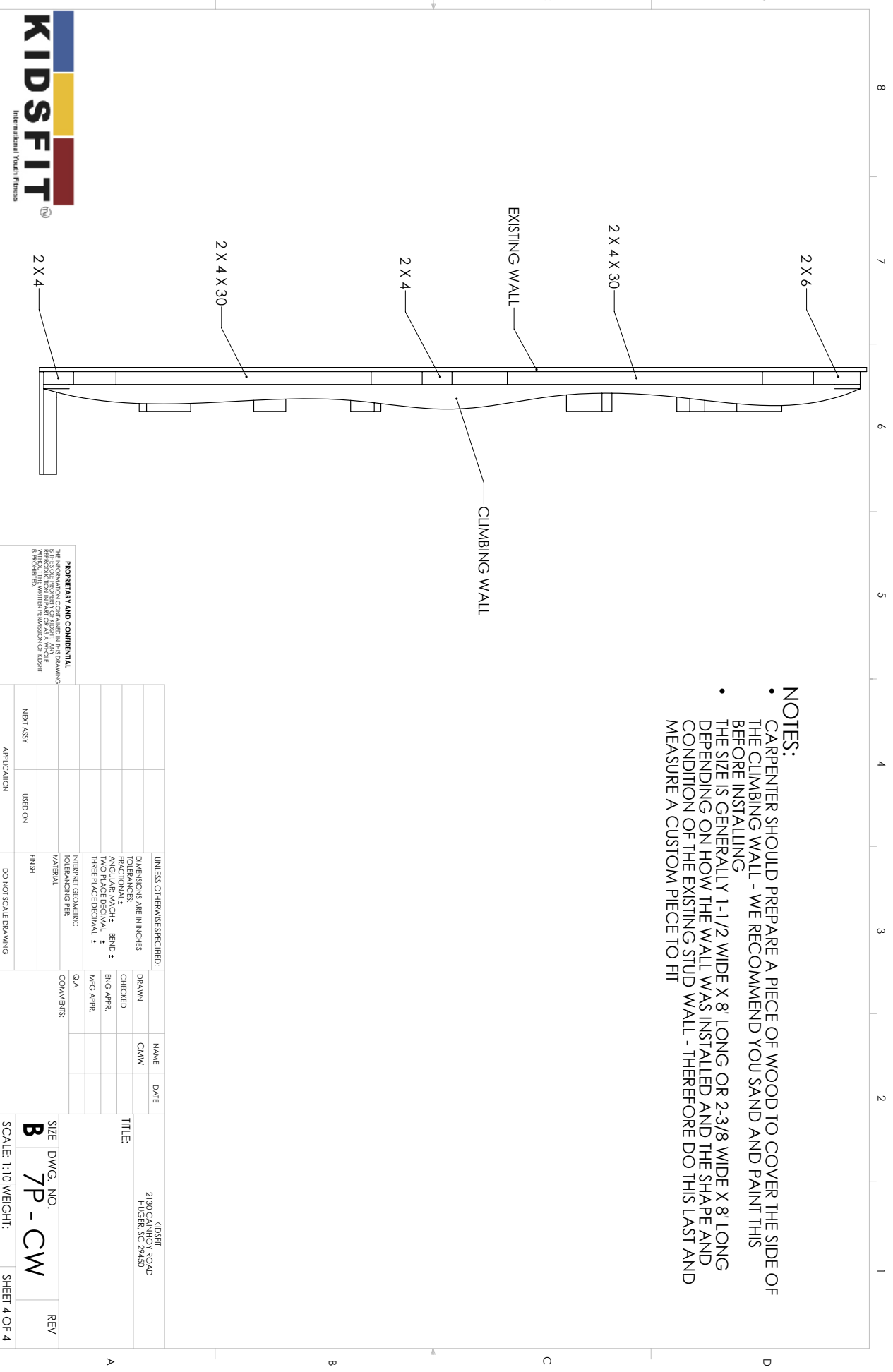


PROPRIETARY AND CONFIDENTIAL
THIS IS THE PROPERTY OF KIDSFIT. ANY REPRODUCTION OR TRANSMISSION OF THIS DRAWING WITHOUT THE WRITTEN PERMISSION OF KIDSFIT IS PROHIBITED.

| | | | | |
|---|-----------|------|------|---|
| UNLESS OTHERWISE SPECIFIED: DIMENSIONS ARE IN INCHES TOLERANCES: FRACTIONAL ± ANGULAR: MACH ± AND PLACEMENT ± THREE (3) DECIMAL ± | DRAWN | NAME | DATE | TITLE: |
| INTERPRET GEOMETRIC TOLERANCING PER MATERIAL | CHECKED | CMW | | KIDSFIT 2130 CANNON ROAD HICHER, SC 29450 |
| FINISH | ENG APPR. | | | SIZE DWG. NO. B 7P - CW |
| USED ON | MFG APPR. | | | SCALE: 1:16 WEIGHT: |
| APPLICATION | COMMENTS: | | | SHEET 3 OF 4 |
| NEXT ASSY | Q.A. | | | REV |

8 7 6 5 4 3 2 1

A B C D



- NOTES:**
- CARPENTER SHOULD PREPARE A PIECE OF WOOD TO COVER THE SIDE OF THE CLIMBING WALL - WE RECOMMEND YOU SAND AND PAINT THIS BEFORE INSTALLING
 - THE SIZE IS GENERALLY 1-1/2 WIDE X 8' LONG OR 2-3/8 WIDE X 8' LONG DEPENDING ON HOW THE WALL WAS INSTALLED AND THE SHAPE AND CONDITION OF THE EXISTING STUD WALL - THEREFORE DO THIS LAST AND MEASURE A CUSTOM PIECE TO FIT

| | | | | | | | | | | | |
|---|--|---|--|------------------|--|--|--|----------------------------|--|--|--|
| <p>PROHIBIT AND COMMERCIAL THIS IS A PRELIMINARY DRAWING SUBJECT TO CHANGE WITHOUT NOTICE WITHOUT THE WRITTEN PERMISSION OF KIDSFIT IS PROHIBITED.</p> | | <p>UNLESS OTHERWISE SPECIFIED: DIMENSIONS ARE IN INCHES TOLERANCES: FRACTIONAL ± ANGULAR: MACH ± BEND ± AND PRACTICAL ± THREE (3) DECIMAL ± INTERPRET GEOMETRIC TOLERANCING PER MATERIAL</p> | | <p>FINISH</p> | | <p>DO NOT SCALE DRAWING</p> | | <p>APPLICATION USED ON</p> | | <p>NEXT ASSY</p> | |
| <p>DRAWN</p> | | <p>NAME</p> | | <p>DATE</p> | | <p>2190 CALHOUN HUGER, SC 29450</p> | | <p>TITLE:</p> | | <p>SIZE DWG. NO. B 7P - CW</p> | |
| <p>CHECKED</p> | | <p>ENG APPR.</p> | | <p>MFG APPR.</p> | | <p>Q.A.</p> | | <p>COMMENTS:</p> | | <p>REV</p> | |

SCALE: 1:10 WEIGHT: SHEET 4 OF 4